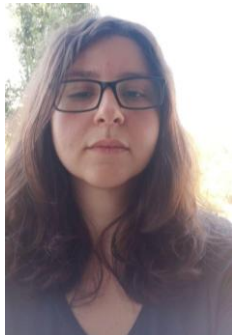



PERSONAL INFORMATION

**Alexandra Deliu**



 No. 23, Carol I Bd., entrance B, ap. 50, district 3, Bucharest

 0040 0763690417

 [alexandradeliu@yahoo.com](mailto:alexandradeliu@yahoo.com)

Date of birth 1987/06/16 | Nationality Romanian

WORK EXPERIENCE

November 2014 -	Research fellow at the Research Institute for Quality of Life, Romanian Academy
2020	<p><b>Participation in quantitative studies</b></p> <p>Member of the research team in Rapid assessment of the situation of children and their families with a focus on the vulnerable ones in the context of the COVID-19 outbreak in Romania (Coordinator: Claudia Petrescu). Beneficiary: UNICEF</p>
October 2011 – October 2014	Research assistant in the project: Social change in the context of international migration: patterns of value, political participation, satisfaction with life, coordinated by Bogdan Voicu, Research Institute for Quality of Life.
June 2009 - July 2009	Field researcher in the research project STISOC - <i>Science and Society</i> , principal investigator Lazăr Vlăsceanu: applying questionnaires in a village from Botosani County (University of Bucharest);
September 2008	Field work (applying questionnaires, prospecting the community, conducting interviews) in the <i>Romanian Communities in Spain</i> research, principal investigator Dumitru Sandu (Soros Foundation);
August 2008	Data gathering through applying questionnaires in a research organized by the Romanian Institute for Quality of Life ( <i>The Capacity of the Romanian Institutions to Absorb and Manage Structural Funds in the Sphere of Social Inclusion</i> ).
	<p><b>Participation in qualitative studies</b></p>
2021	Field researcher (identifying respondents, conducting interviews) in the project AMASE - A multidimensional approach to social exclusion in later life (Coordinator: Iuliana Precupețu)
2018-2019	Local expert (Researcher) - Development of plans for the de-institutionalization of children deprived of parental care and their transfer to community-based care. Technical assistance project for the (former) National Authority for the Protection of Children Rights and Adoption.
2019	Field researcher (conducting interviews with service providers and former beneficiaries/young people who grew up within the special protection system, contributing to the final report), <i>Situația tinerilor care părăsesc sistemul de protecție specială din România</i> (Coordinator: Alexandru Toth; Sociometrics for SOS Satele copiilor Romania)
2018	Member of the research team in Research on refugee integration in Romania. The needs and perspective of refugees vis a vis the integration process [in Romania], (Coordinator: Bogdan Voicu), Beneficiary: CNRR & UNHCR)
May 2017 - 2018	Member of the research team for the FP7 project Temporary vs. Permanent migration (Coordinator at the University of Bucharest: Monica Șerban)

- 2016
- Member of the research team in Situation analysis of Roma children in Romania (Coordinator: Bogdan Voicu), Beneficiary: UNICEF
- October 2011 – October 2014 Research Assistant in the project: Sociological imagination and disciplinary orientation in applied social research, coordinated by Cosima Rughinis, University of Bucharest.
- June 2012 – October 2012 Researcher at the Soros Foundation Romania. Theme: The effects of international migration on sending communities.
- July 2008 and February 2008 Field Researcher, in the sphere of ecological anthropology, in 2 Romanian villages (entities such as common property and the influence of the National Parks on the everyday life of people were approached). The research was coordinated by assistant dr. Monica Vasile.

### Content analysis

- January 2011-March 2011 Family vs. Career. Contemporary Tendencies in Romania, coordinated by Laura Grünberg : member in the research team (analysing media objects, such as articles and commercials from a gender perspective); author of the chapter Feminine career and family in the media (Carieră și familie la feminin, în presă)

### Teaching

- October 2011 – May 2015 Between October 2011 and May 2015, I taught seminars (Methodology of Social Research; Introduction to Sociology; Individualization and Modernity) at the Faculty of Sociology and Social Work, University of Bucharest, for the first, second and third year BA students.

## EDUCATION AND TRAINING

---

- October 2011 – September 2015 PhD studies at the University of Bucharest, faculty of Sociology and Social Work – thesis on identity and migration (Identity here and there. Migration as resource for identity construction)
- August 2013 Summer Course in Narrative Studies, Aarhus University, Denmark.
- August 2012 LSE Methods Summer Programme – Linear Regression Analysis (Stata), UK.
- June 2011 MA in Sociology, The Faculty of Sociology and Social Work, University of Bucharest (MA programme: Research in Sociology, English language). The dissertation thesis, Collective spaces, individual fears. Layers of meaning in the case of Obștea Moșnenilor Bărbătești, was coordinated by professor Lazăr Vlăsceanu.
- June 2009 BA in Sociology, The Faculty of Sociology and Social Work, University of Bucharest (BA programme: Communities Studies), with the thesis Pastoral practices in contemporary mountain communities. An anthropological perspective (Practici pastorale în comunitățile montane contemporane. Perspectivă antropologică), coordinated by assistant dr. Monica Vasile.

## PUBLICATIONS

---

Bogdan Voicu, Monica Șerban, Alexandra Deliu, Elena Tudor. 2013. Acquiescence effects in measuring attitudes towards immigrants: The case of Romania. *Calitatea vieții*, XXIV, nr. 3, p. 311 – 340

Deliu, Alexandra. 2015. Stories of Alterity in Migration: Romanian Cases. In: Bashir, H. & Roye, S. (eds.) *Experiencing Otherness. Multidisciplinary Perspectives*. Oxford: Inter-Disciplinary Press, ISBN: 978-1-84888-379-5, pp. 79-88.

Deliu, Alexandra. 2015. Telling Stories of Migration: Individual Narratives of Departing and Returning. In: Moenandar, S. J. & Kavner Miller, N. (eds.) *Not Ever Absent. Storytelling in Arts, Culture and Identity Formation*, Oxford: Inter- Disciplinary Press, ISBN: 978-1-84888-337-6, pp. 27-36.

- Deliu, Alexandra. 2015. Community Frames of Migration: The Path from Seaca to Spain. *Social Change Review* 13(1): 29-54.
- Deliu, Alexandra, Elena Tudor. 2015. Prezentarea conferinței Quality of Life: a Challenge for Social Policy, ICCV, 2015. *Calitatea Vieții XXVI(2)*: 103 -107.
- Deliu, Alexandra, Elena Tudor, Alexandra Vilcu. 2015. - Secțiunea Impact of International Migration on Societies and Quality of Life din cadrul conferinței internaționale Quality of Life: a Challenge for Social Policy, ICCV, Academia Română, 23-25 aprilie 2015. *Calitatea Vieții XXVI(2)*: 108 -114.
- Deliu, Alexandra. 2015. Recenzie - ADINA MIHĂILESCU, *Minimul de trai. Instrument în politicile sociale*, București, Editura Academiei Române, 2014, 107 p. *Calitatea Vieții XXVI(3)*: 307-308.
- Deliu, Alexandra. 2016. The Other at home. Narratives of difference and migration. In: Longden, V. (ed.) *Situating Strangeness: Exploring the Intersections between Bodies and Borders*, Oxford: InterDisciplinary Press, ISBN 978-1-84888-417-5, pp. 33-42.
- Deliu, Alexandra. 2016. Conferința anuală a cercetării în sociologie și asistență socială, Sibiu, 17-18 octombrie 2014. *Sociologie românească XIII(3-4)*.
- Deliu, Alexandra. 2016. Colegiul Tehnic „David Praporgescu” – Turmu Măgurele. Studiu de caz, *Calitatea Vieții. Revistă de politici sociale*, 27(4), pp. 396-413.
- Cătălin Zamfir; Sorin Cace; Iuliana Precupețu, Ana Maria Preoteasa; Manuela Stănculescu; Elena Zamfir (coord). Ionuț Anghel, Daniel Arpinte, Sergiu Bălătescu, Cosmin Briciu, Bianca Buligescu, Alexandra Deliu, Dana Eremia, Eugen Glăvan, Simona Ilie, Gabriela Neagu, Cosmina Elena Pop, Adriana Neaguț, Claudia Petrescu, Iulian Stănescu, Monica Marin, Flavius Mihalache, Adina Mihăilescu, Mihnea Preotesi, Simona Stănescu, Livia Ștefănescu, Mariana Stanciu, Cristina Tomescu, Laura Tufă, Elena Tudor, Alexandra Vilcu. 2016a. *Calitatea vieții: România 2035. Direcții și priorități, în Valentin-Ionel Vlad (coord). Strategia de dezvoltare a României în următorii 20 de ani. Volumul I1. București: Editura Academiei Române, pp. 284-314.*
- Cătălin Zamfir (coord). Ionuț Anghel, Daniel Arpinte, Cosmin Briciu, Sorin Cace, Alexandra Deliu, Dana Eremia, Sebastian Fitzek, Simona Ilie, Monica Marin, Flavius Mihalache, Ana Maria Preoteasa, Mihnea Preotesi, Adina Mihăilescu, Gabriela Neagu, Cosmina Pop, Iuliana Precupețu, Mariana Stanciu, Simona Stănescu, Manuela Stănculescu, Cristina Tomescu, Elena Tudor, Elena Zamfir. 2016b. *O strategie a relansării calității vieții în perspectiva 2037: Direcții. Priorități. Obiective. Ținte. Restricții. Oportunități, în Valentin-Ionel Vlad (coord). Strategia de dezvoltare a României în următorii 20 de ani. Volumul II1. Partea I. București: Editura Academiei Române, pp. 361-390*
- Deliu, Alexandra. 2017. Narratives of Migration and Becoming: Ethnicity across borders. In: Moenandar, S.J. & L. Wood (eds.). *Stories of Becoming. Using Storytelling for Research, Counselling and Education*. Nijmegen: Campus Orleon, pp. 23-56.
- Deliu, Alexandra. 2017. Religious Orientation, Migration and Identity Construction: Evidence from a Contemporary Romanian Rural Community. In Sideri, E. & L. E. Roupakia (eds.) *Religions and Migrations in the Black Sea Region*. Palgrave Macmillan, Cham, pp. 105-126.
- Deliu, Alexandra. 2018. *Calitatea societății românești, În Mărginean, I. & Precupețu, I. (eds.), Enciclopedia calității vieții, Bucharest, Editura Academiei Române, pp. 444-459*
- Deliu, Alexandra. 2019. Identity Here and There. Migration as Resource for Identity Construction. Bucharest, ProUniversitaria.
- Petrescu, Claudia (coord.), Alexandra Deliu, Flavius Mihalache, Adriana Neaguț, Laura Tufă 2020. *Evaluarea rapidă a situației copiilor și familiilor, cu accent pe categoriile vulnerabile, în contextul epidemiei de COVID-19 din România. București: UNICEF.*
- Voicu, Mălina. (coord.), Daniel Arpinte, Delia Bădoi, Alexandra Deliu, Simona Mihaiu, Simona Maria Stănescu, Cristina Tomescu 2020. *Pandemia COVID19 din perspectivă demografică. Raport Social al ICCV 2020. București: Institutul de Cercetare a Calității Vieții.*
- Șerban, Monica, Yoan Molinero Gerbeau, Alexandra Deliu. 2020. Are the guest-worker programmes still effective? Insights from Romanian migration to Spanish agriculture Rye, J. F., O'Reilly, K. *International Labour Migration to Europe's Rural Regions*, Routledge.
- Deliu, Alexandra, Elena Tudor. 2021. Atitudini față de știință și tehnologie, în Voicu, B, Rusu, H., Tufiș, C. (coordonatori), *Atlasul valorilor sociale. România la 100 de ani*

## CONFERENCES

Social inequality and excess mortality in times of pandemic (with Malina Voicu), the National Conference of the Romanian Sociologists Society - „Curators and actors of the social fabric: Views through „Post-lenses”, Transilvania University of Brașov, 17<sup>th</sup> -18<sup>th</sup> of June 2021.

Identities across borders. Refugees, low skilled migrants and expats (with Bogdan Voicu), the National Conference of the Romanian Sociologists Society - „Curators and actors of the social fabric: Views through „Post-lenses”, Transilvania University of Brașov, 17<sup>th</sup> -18<sup>th</sup> of June 2021.

Conceptualizing Diaspora -State Policies and Belonging. The Case of Romania (with Malina Voicu), IPSA Congress (International Political Science Association), Lisbon, 10<sup>th</sup>-15<sup>th</sup> of July 2021.

Diaspora Policies And Path-dependence: A Case Study On Romania (with Malina Voicu), ESA (European Sociological Association) conference, Barcelona, August 31<sup>st</sup> –September 3<sup>rd</sup> 2021.

The impact of migration for work in agriculture on migrants` communities of origin: a comparative analysis of two rural contexts in contemporary Romania (with Monica Șerban and Madalina Manea), RoMig (The Romanian Network for Migration Studies) National Conference, Iași, 23<sup>rd</sup> -24<sup>th</sup> of September 2021.

Gender Role Identity: Migration, Ethnicity and Religious Affiliation (second author: Mălina Voicu), the 14<sup>th</sup> Conference of the European Sociological Association, Europe and Beyond: Boundaries, Barriers and Belonging, University of Manchester, 20-23 August 2019

Abroad or at home? Social policy and return migration in Romania. The national conference on population studies (Studii de Populație. Provocări și perspective.), Center for Population Studies, Cluj Napoca, 1-2 July 2019.

Identity and change, individuals and social contexts. European expats to Bucharest. SRS 2018 Conference (Society for Romanian Studies) - #Romania100: Looking Forward through the Past, Bucharest, ASE, 26-29 June.

Working in agriculture in Spain. Motivations, decisions and strategies. RoMig 2018 Conference (The Second Annual Conference of the Romanian Network for Migration Studies - From source to destination: new challenges of migration in Central and Eastern Europe), Timișoara, 11-12 September.

Being Roma in Romania. Subjective accounts of difference and integration (coauthor Elena Tudor). Conferința SSR 2018 (Living in a Liquid Society, 5th RSS Conference), Timișoara, 14-15 September.

Atitudini față de migranți (first author: Bogdan Voicu), Conferința Coaliției pentru Drepturile Migranților și Refugiaților (CDMiR), Bucharest, November 26th, 2018.

Identity, dynamics and adjustments. The case of EU expats in Bucharest, Conferința Anuală a Cercetării de Sociologie și Asistență Socială, ediția a XVII-a, ULBS, 14-15 Decembrie 2018.

Individual outcomes of migration in agriculture: a comparison of two trajectories from rural Romania to Spain (coauthors: Georgiana Toth and Monica Șerban). ESA 2017: (Un)Making Europe: Capitalism, Solidarities, Subjectivities, Athens, Greece, August 29 –September 1st.

Romanian youth migration – contagious behaviour in peer networks? A case study (first author: Mădălina Manea). ESA 2017: (Un)Making Europe: Capitalism, Solidarities, Subjectivities, Athens, Greece, August 29 –September 1st.

From Romania to Spain: different trajectories, different outcomes? (coauthors Georgiana Toth and Monica Șerban) Annual Conference of the Romanian Network for Migration Studies (RoMig): Migration from and towards Romania. Research, Policy and Practice, Cluj Napoca, 5-6 September 2017.

Diffusion of migration behaviour in a youth peer group - case study in a Romanian rural area. (first author: Mădălina Manea) Annual Conference of the Romanian Network for Migration Studies (RoMig): Migration from and towards Romania. Research, Policy and Practice, Cluj Napoca, 5-6 September 2017.

Types of Romanian migration to agriculture and types of migrants. A case study (coauthors Monica Șerban and Mădălina Manea); 4th International Seminar on Migrations, Agriculture and Food Sustainability: Dynamics, Challenges and Perspectives in the Global Context, Madrid, Spain, 2017.

Identities and borders. International migration and identity shifts; New Societies, Old Minorities / New Minorities, Old Societies? - the international conference of the Romanian Sociological Society, Sibiu, Romania, 2016.

Mapping Romanian associations abroad: types of associative enterprises (coauthor Elena Tudor); Facing a New "Age of Migration"? Methodological Challenges, Conceptual Questions, Political Entanglements (ESA RN35 Midterm Conference), Bucharest, Romania, 2016;

Redefining identity in migration: evidence from Romanian experiences; IX Congresso Português de Sociologia – Portugal, território de territorios, 6-8 iulie, Faro, Portugal, 2016;

Religious orientation, migration and identity construction: Evidence from a Romanian contemporary rural community; IIDC 2015 (International Interdisciplinary Doctoral Conference), 25 -26 September, Bucharest, Romania.

Individuals and states. Narrative resources in accounting for migration as life strategy; ESA 2015 – Differences, Inequalities and Sociological Imagination, European Sociological Association, 25-28 August, Prague, the Czech Republic.

Searching for a better life. Migrants' accounts on change and life satisfaction (coauthor Anghel Ionuț -Marian); ESA 2015 – Differences, Inequalities and Sociological Imagination, European Sociological Association, 25-28 August, Prague, the Czech Republic.

Discourse, distance and shifting boundaries. International migration and identity construction, the 2nd International Symposium EdiSo – Discourses and Societies on the Move, 18 -20 June, Coimbra, Portugal, 2015.

International mobility and subjective well-being. Migrants' accounts on change and life satisfaction, Quality of Life: a Challenge for Social Policy, 23 -25 April, Bucharest, Romania.

The Other at home. Narratives of difference and migration; Strangers, aliens and foreigners, the 6th global conference, Prague, the Czech Republic, 2014

Migration and Ethnicity. Borders and uncertainties; Annual conference in sociology, Lucian Blaga University, Sibiu, Romania, 2014.

Telling stories of migration. Individual narratives of departing and returning; 6th Global Conference on Storytelling, Lisbon, Portugal, 2014.

Transforming social borders. Ethnicity at home and abroad; (Re)thinking Global Connectedness: Critical Perspectives on Globalization, Texas A&M University, Liberal Arts International Program, Doha, Qatar, 2014.

Stories of alterity in migration; Strangers, aliens and foreigners, the 5th global conference, Oxford, UK, 2013.

Where to, where from? The construction of social spaces in migration; Crisis, critique and change, the 11th international ESA conference, Turin, Italy, 2013.

Community frames of migration. The path from seaca to Spain; Crisis, critique and change, the 11th international ESA conference, Turin, Italy, 2013.

Narratives of error in quantitative data analysis. The matter of acquiescent response style; Distance and togetherness through time and space, Conferința anuală a Facultății de Sociologie și Asistență Socială, Bucharest, 2013.

Happiness as a discursive practice; Beyond globalization?, the international conference of the Romanian Sociological Society, București, 2012.

**PERSONAL SKILLS**

Mother tongue(s) Romanian

Other language(s)

	UNDERSTANDING		SPEAKING		WRITING
	Listening	Reading	Spoken interaction	Spoken production	
<b>English</b>	C2	C2	C2	C2	C2
<b>Spanish</b>	B2	B2	B1	B1	A2
<b>French</b>	B2	B2	B2	B2	B2

Levels: A1/A2: Basic user - B1/B2: Independent user - C1/C2 Proficient user  
[Common European Framework of Reference for Languages](#)

**Social skills and competences** I am able to develop good working relationships with both my peers and my superiors, due to my personality traits (I am communicative and I know how to express my theoretical orientations, my visions and my beliefs in a proper manner, while keeping my mind open to logically shaped argumentations and advice).

**Organisational skills and competences** I can easily work on individual projects and as a part of broader teams and I am able to organize my activity as to meet deadlines and to fulfil external expectations.

**Computer skills and competences** MS Office SPSS  
 Amos  
 Stata  
 Ethnograph

**Artistic skills and competences** Literary writing